

IN VITRO IMAGING

VIVASCOPE

RESEARCH

RS-G5 RIBBON SCANNING CONFOCAL

# VivaScope RS-G5

RS-G5



[www.vivascope.com](http://www.vivascope.com)



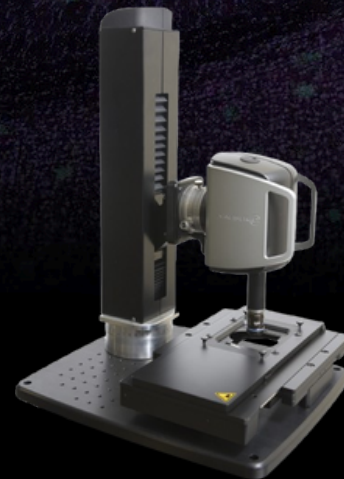
# VivaScope RS-G5

The RS-G5 is an upright resonance scanning reflectance & fluorescence confocal microscope, which quickly creates large-scale mosaic images with cellular level, down to the pixel accuracy. Reducing workflow from weeks to hours, with perfect homogeneity, the RS-G5 provides your lab unprecedented efficiency, slashing image acquisition time while delivering stunningly clear results.

The large scan area of 120 x 80 mm and 11 mm Z-Axis travel range, as well as new highly sensitive GaAsP detectors with improved quantum efficiency make the RS-G5 an ideal microscope for Cleared Tissue Imaging, with full resolution of your optic.

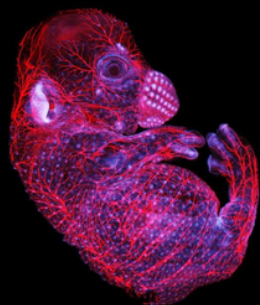
With applications in pathology, neuroscience, developmental biology, and translational research, this high-performing system was developed specifically for the research scientist.

The RS-G5 supports dry, oil, glycerol, & water objectives, provides automated single, simultaneous, or sequential image acquisition, and has 5 wavelengths (405, 488, 561, 640, and 785nm).



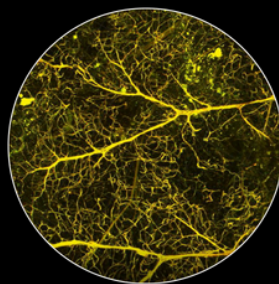
Find out more:

visit the **RS-G5**  
product site



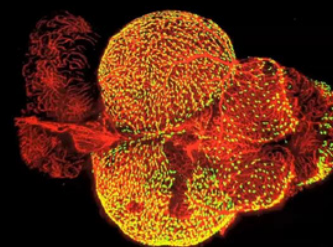
## EMBRYO

Large scan area 120 x 80 mm and  
11 mm Z-Axis travel range.



## ADIPOSE TISSUE

6.9 x 6.3 mm (Z Step 1.5  $\mu$ m, Zoom  
1.6, Avg 4, 30X/1.05 NA Objective)



## ZEBRA FISH

Granular Perithelial cells (green)  
and blood vessels (red)

Technical specifications are subject to change without notice. Revision Level: 02/2025

Caliber Imaging & Diagnostics  
50 Methodist Hill Dr., Ste 1000  
Rochester, NY 14623



Email: [info@caliberid.com](mailto:info@caliberid.com)  
Phone: +1 585.239.9800  
[www.vivascope.com](http://www.vivascope.com)